

Status and Management of Coastal Cutthroat Trout in Oregon

Christopher Lorion

Oregon Department of Fish and Wildlife

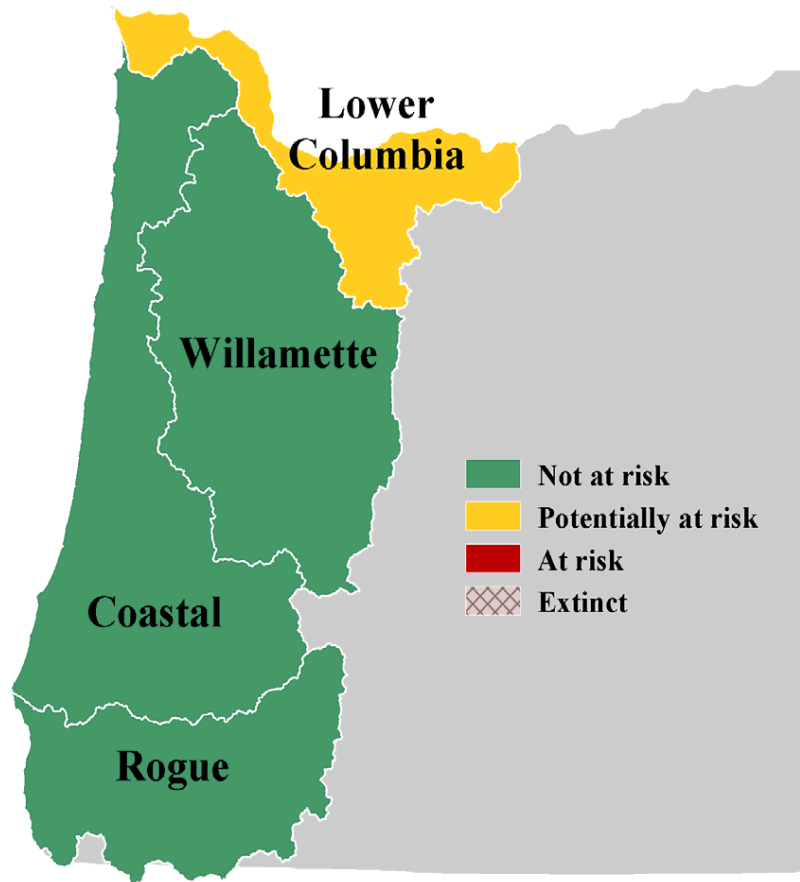


Outline

- CCT Assessments
- Status and Trend Monitoring
- Overview of Fishing Regulations
- Habitat Protection and Restoration Update



Oregon Native Fish Status Report - 2005



- Coastal Cutthroat Trout populations grouped into 4 Species Management Units (SMUs)
- Conservation risk based on interim criteria:
 - Existing populations
 - Habitat Use Distribution
 - Abundance
 - Productivity
 - Reproductive Independence
 - Hybridization
- Quantitative data limited, assessment based on available data and professional opinion

Lower Columbia Coastal Cutthroat SMU

ESA Designation:
None

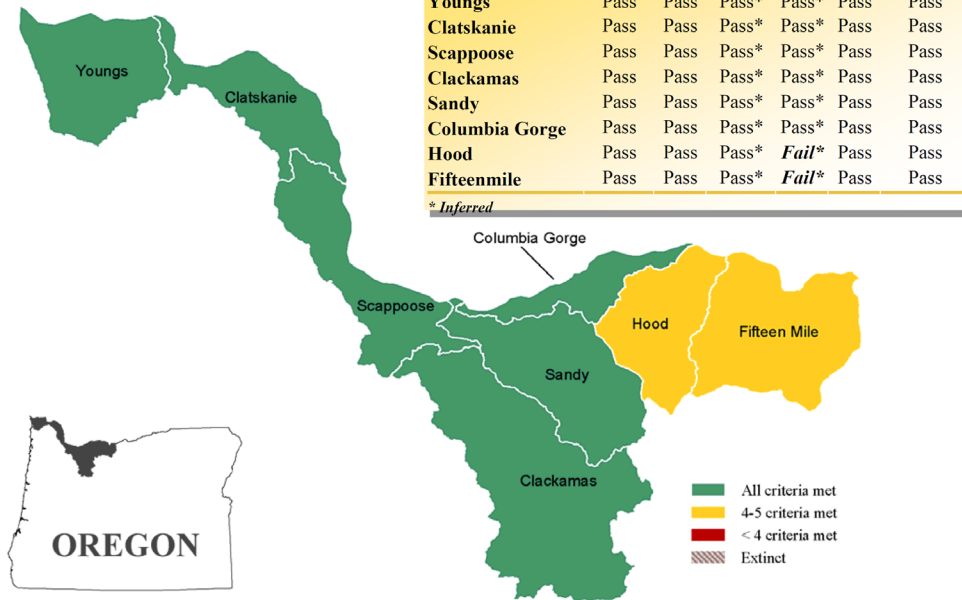
State Status:
Critical

Interim Assessment:
Potentially at Risk

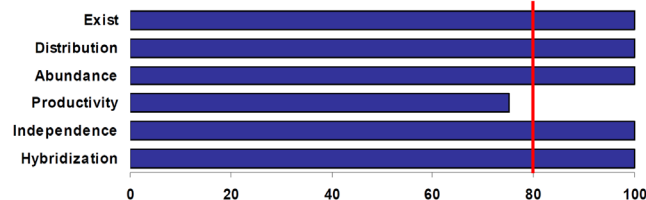
The Lower Columbia River basin supports the resident, fluvial, adfluvial and anadromous life histories of coastal cutthroat trout. The Lower Columbia River Coastal Cutthroat SMU is comprised of eight populations. All populations passed all six of the interim criteria except the Hood and Fifteenmile populations, which failed the productivity criterion due to the extremely depressed anadromous life-history. Since quantitative data are limited, the assessment was based on available data, as well as anecdotal evidence and professional opinion. This SMU was assessed as ‘potentially at risk’ due to the failure of the productivity criterion. Limited data sets and inferences from other information for populations in this SMU provide a qualified level of confidence in the assessment of the interim criteria.

Population	Exist	Dist.	Abund.	Prod.	Ind.	Hybrid
Youngs	Pass	Pass	Pass*	Pass*	Pass	Pass
Clatskanie	Pass	Pass	Pass*	Pass*	Pass	Pass
Scappoose	Pass	Pass	Pass*	Pass*	Pass	Pass
Clackamas	Pass	Pass	Pass*	Pass*	Pass	Pass
Sandy	Pass	Pass	Pass*	Pass*	Pass	Pass
Columbia Gorge	Pass	Pass	Pass*	Pass*	Pass	Pass
Hood	Pass	Pass	Pass*	<i>Fail*</i>	Pass	Pass
Fifteenmile	Pass	Pass	Pass*	<i>Fail*</i>	Pass	Pass

** Inferred*



Percent of Populations Meeting Criteria

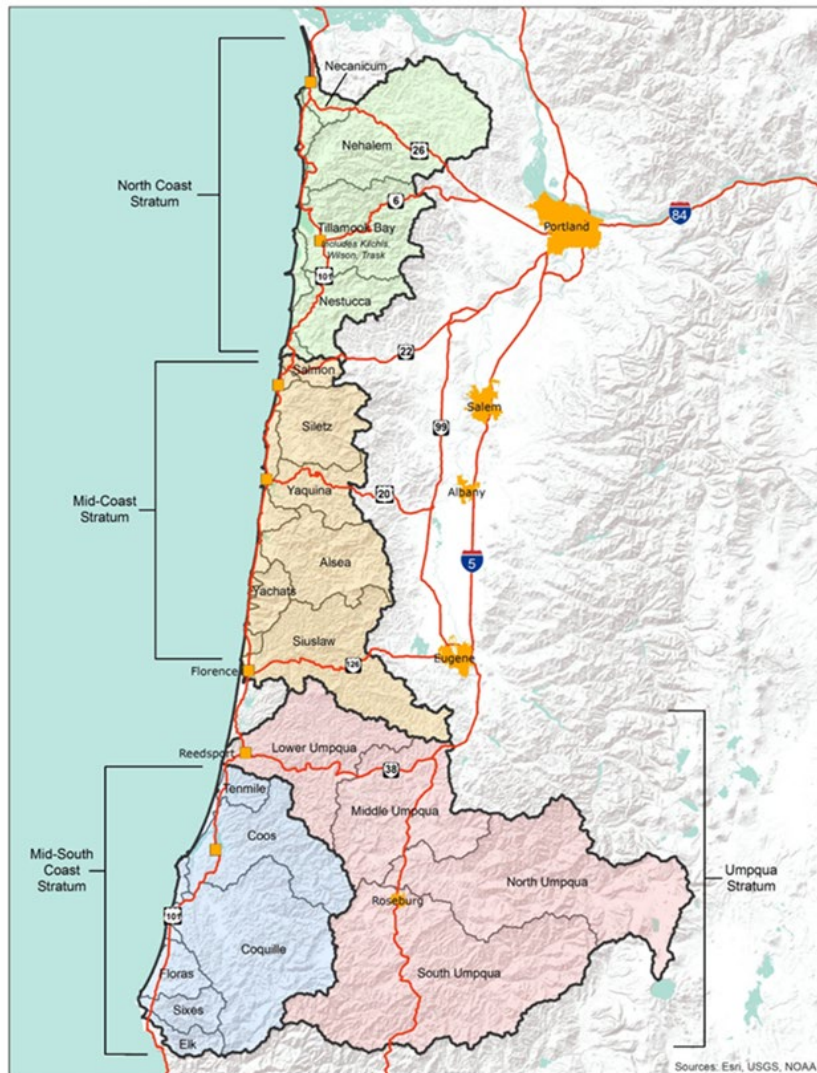


- Lower Columbia SMU considered “Potentially at risk”
- Important consideration was potential loss of anadromous life history in some populations
- Lower Columbia Coastal Cutthroat SMU is on the Oregon Sensitive Species List

Oregon Coast SMU

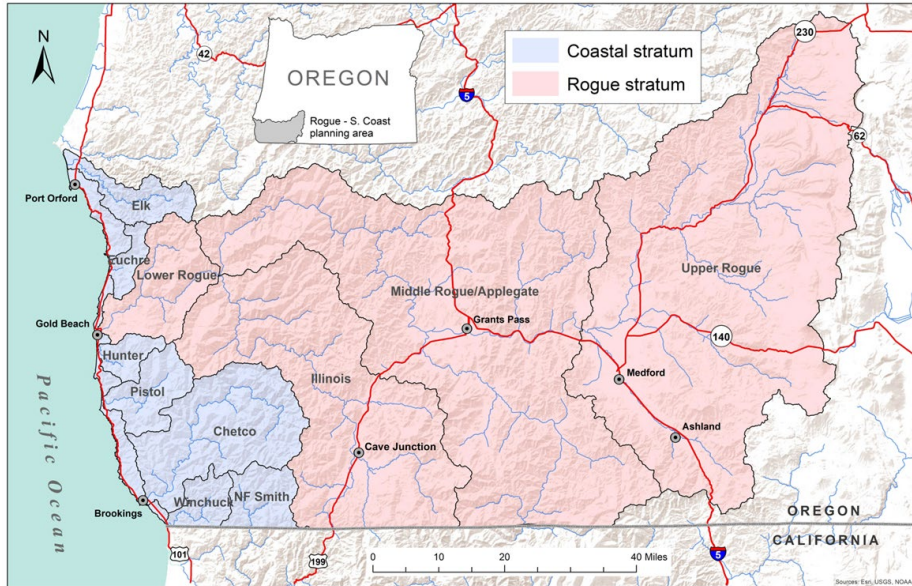
Coastal Multi-Species Conservation and Management Plan (2014)

- Status assessment (spatial structure and diversity)
- All 19 CCT “populations” deemed viable, with data gaps acknowledged



		Chinook ^a	Spring Chinook	Chum	Winter Steelhead	Summer Steelhead	Cutthroat
SMU Viability Results	Viable Populations	17	1	3	19	2	19
	Non-Viable Populations	1	1	1	0	0	0
	Populations with Unknown Viability	0	0	9	0	0	0
	Viable Strata	4/4	1/1	N/A	4/4	2/2	4/4
Indicators of Confidence in Results	Populations with Declining Trend	7	1	4 ^b	2	0	N/A
	Populations with Incomplete Data	4	0	13	17	0	19
Current Overall SMU Status		Strong – Guarded	Sensitive – Vulnerable	Sensitive – Critical	Strong – Guarded	Sensitive – Vulnerable	Strong – Guarded

Rogue–South Coast SMU

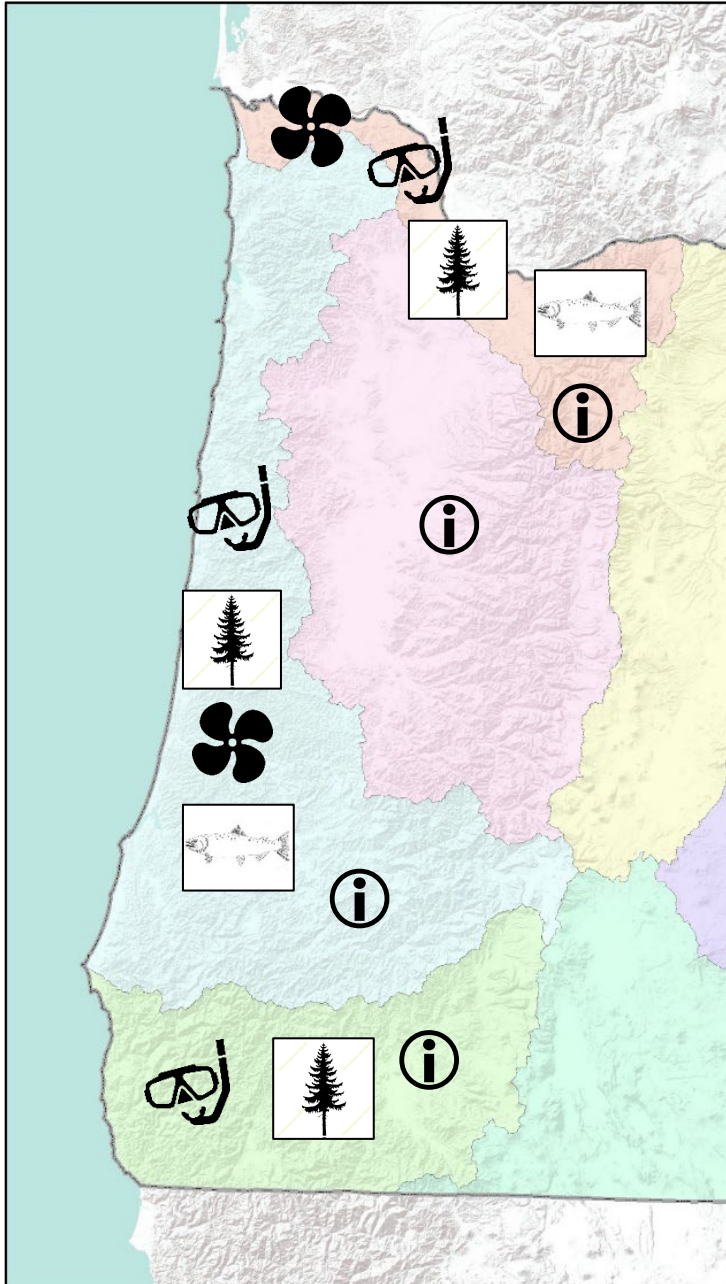


Rogue–South Coast Multi-Species Conservation and Management Plan (2021)

- Status assessment (abundance, spatial structure, and diversity)
- Climate vulnerability assessment

SMU	Stratum	Population	Current Viability Risk	Current SMU Status	Climate Change Risk	Desired SMU Status
CUTTHROAT TROUT	Coastal	Elk	Very Low	Strong-Guarded	Low	Strong-Guarded
		Euchre				
		Hunter				
		Pistol				
		Chetco				
		Winchuck				
	Rogue	Lower Rogue	Very Low			
		Illinois				
		M Rogue/Applegate				
		Upper Rogue				

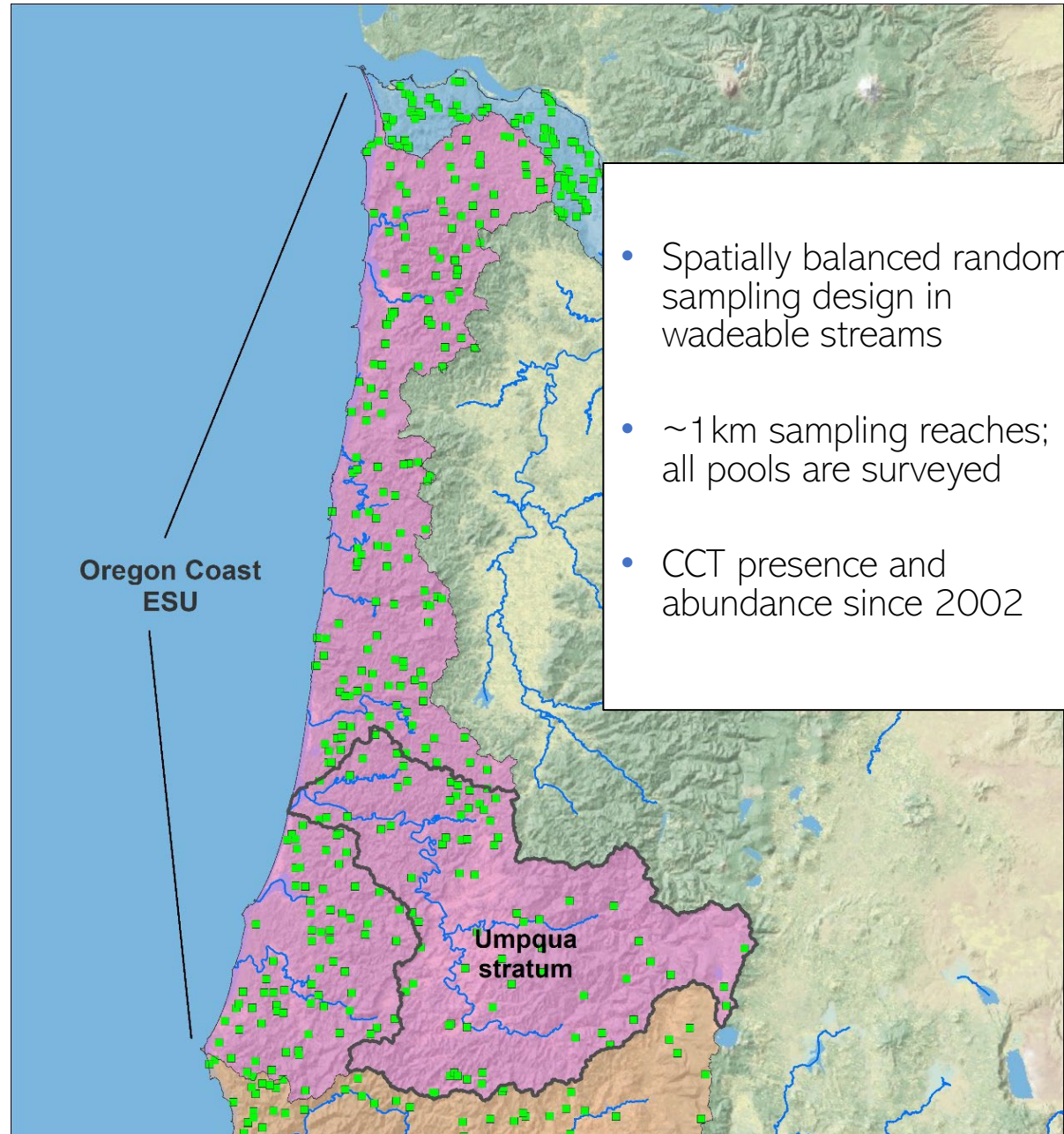
CCT Status and Trend Data Sources



- Oregon Forest Practices Act stream checks
- Research projects by ODFW and others
- Monitoring by other agencies
- Angler Reports

Oregon Coast SMU

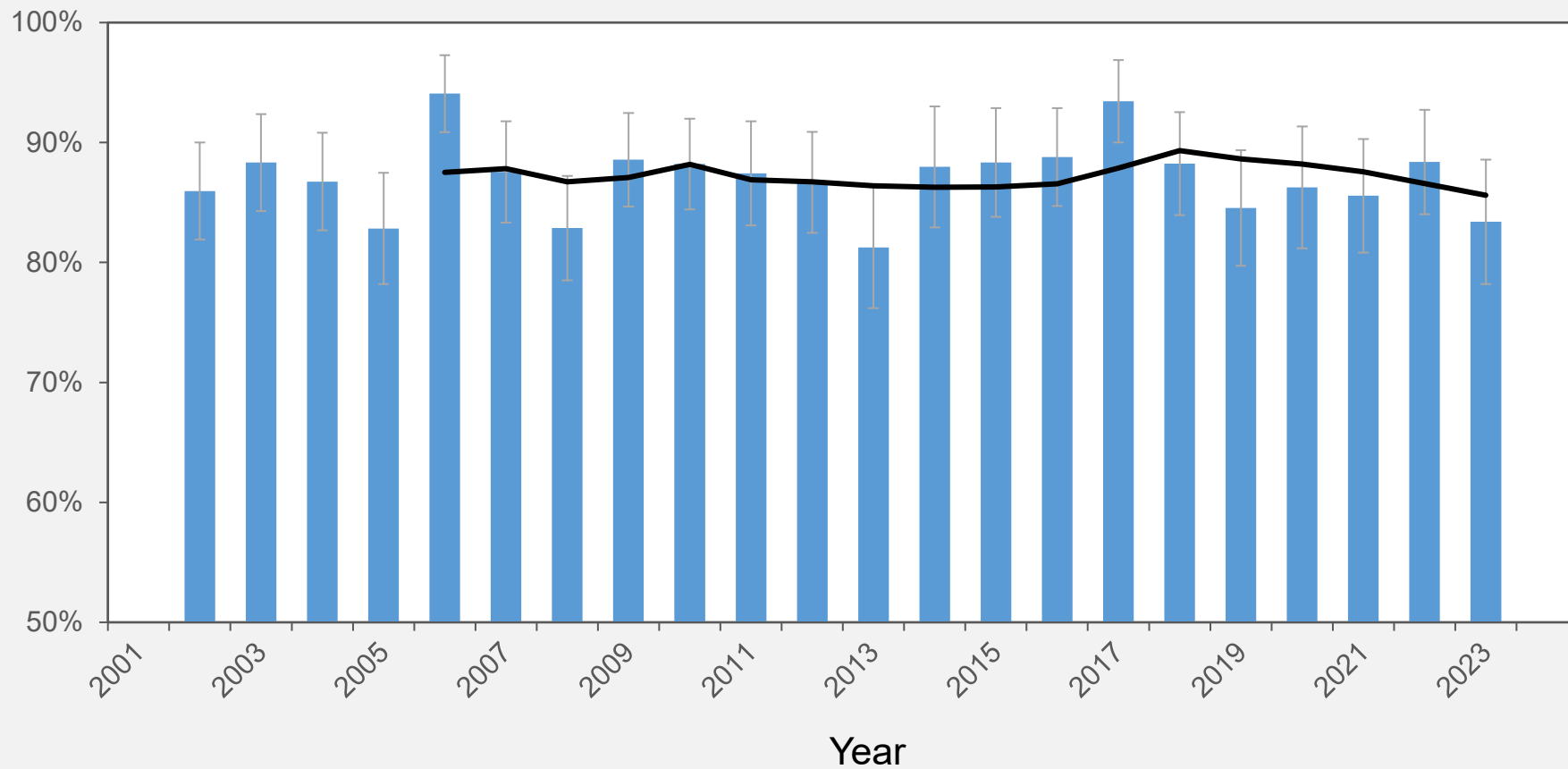
Summer Snorkel Surveys



Oregon Coast SMU

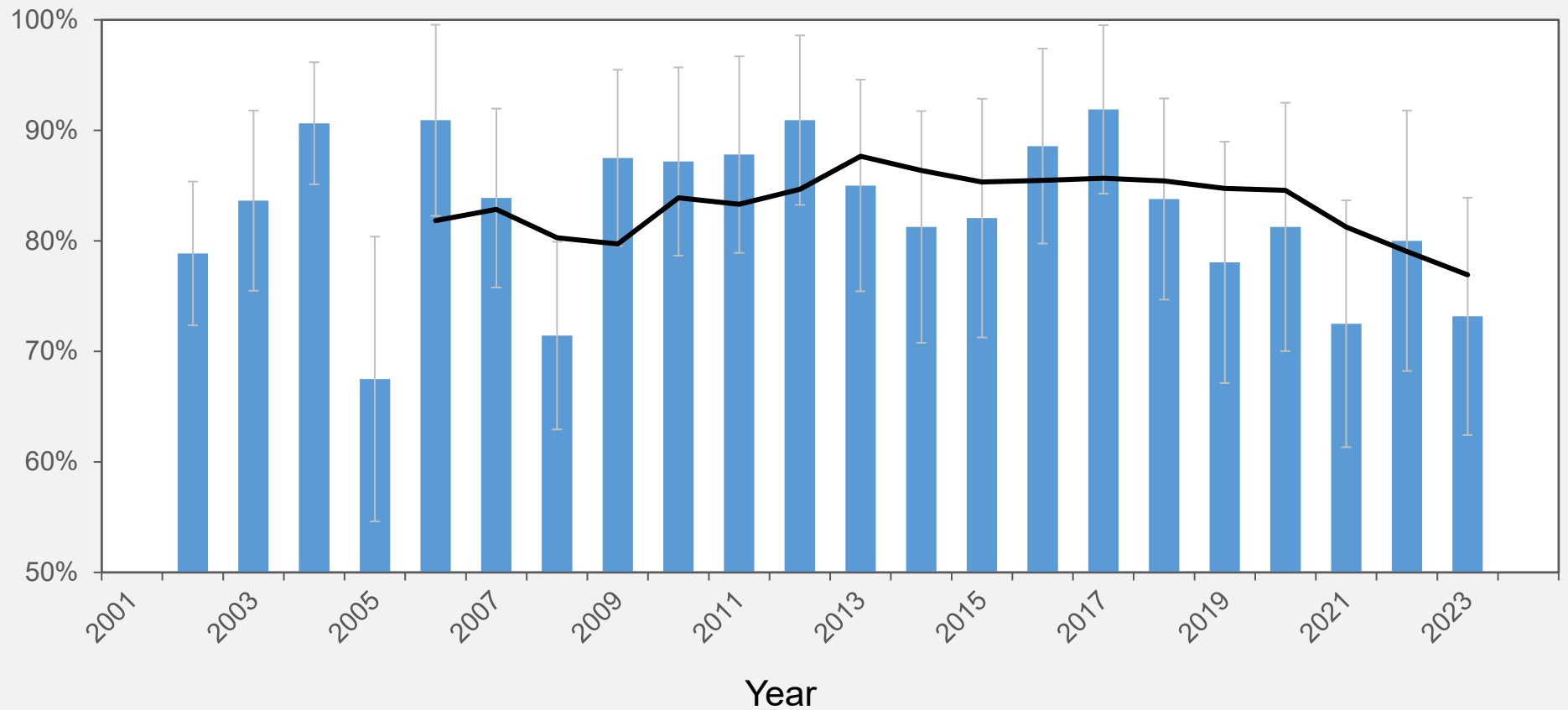


Percentage of snorkel sites with CCT observed
(112-181 sites/year)



Oregon Coast SMU – Umpqua Stratum

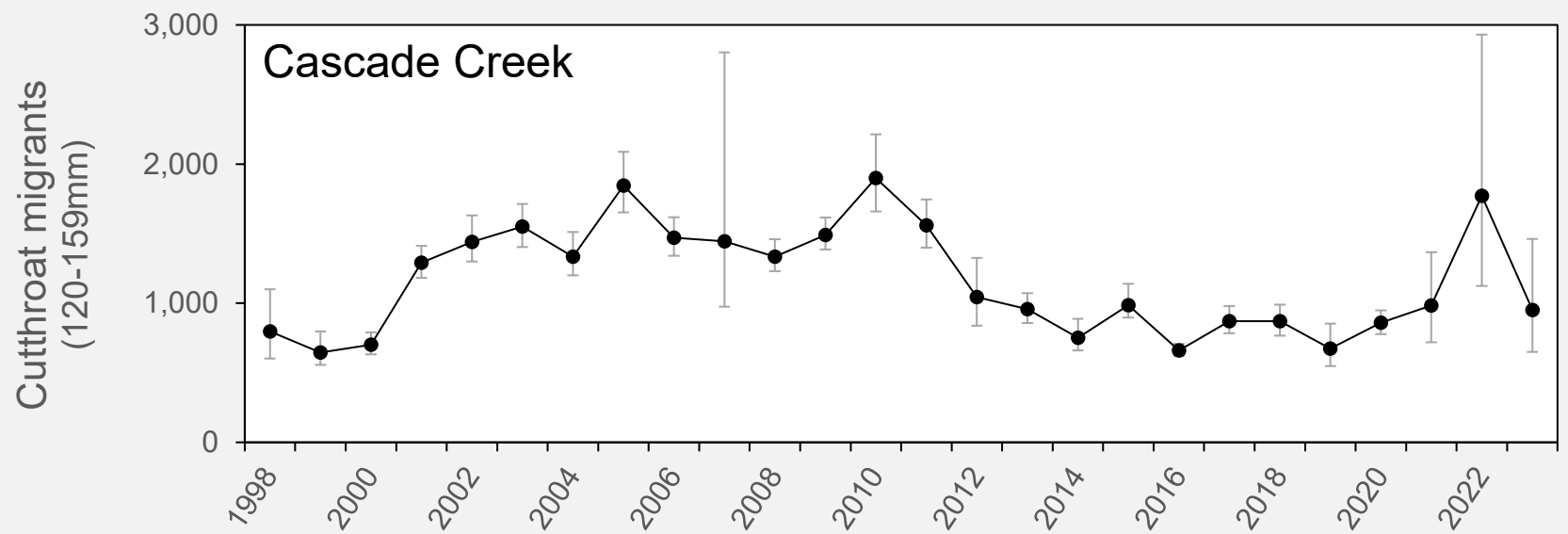
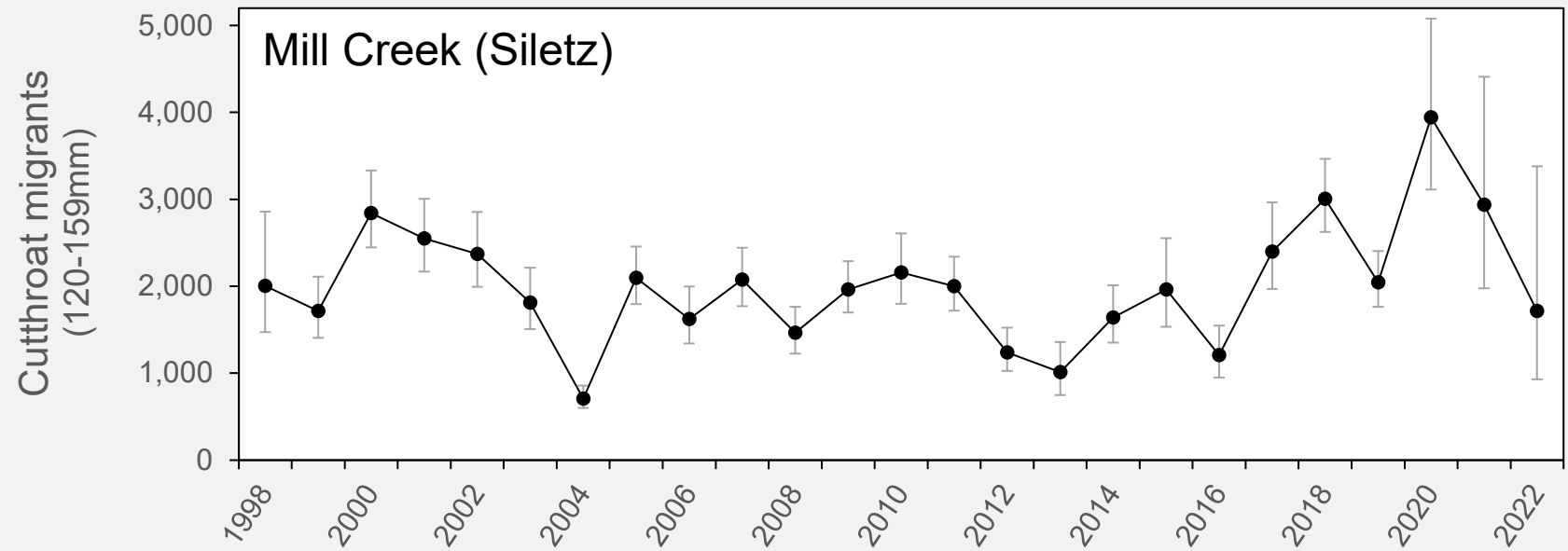
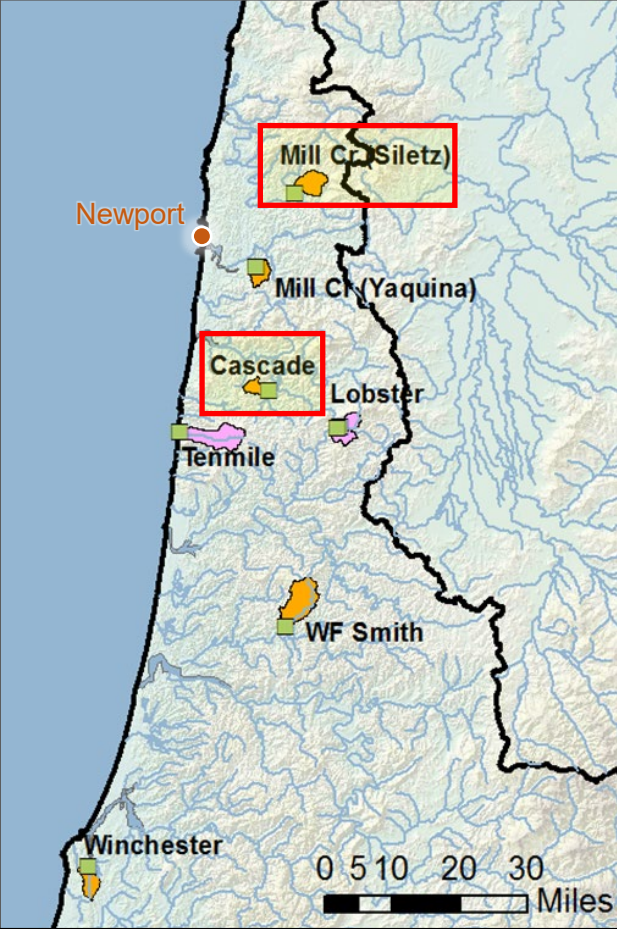
Percentage of snorkel sites with CCT observed
(28-44 sites/year)



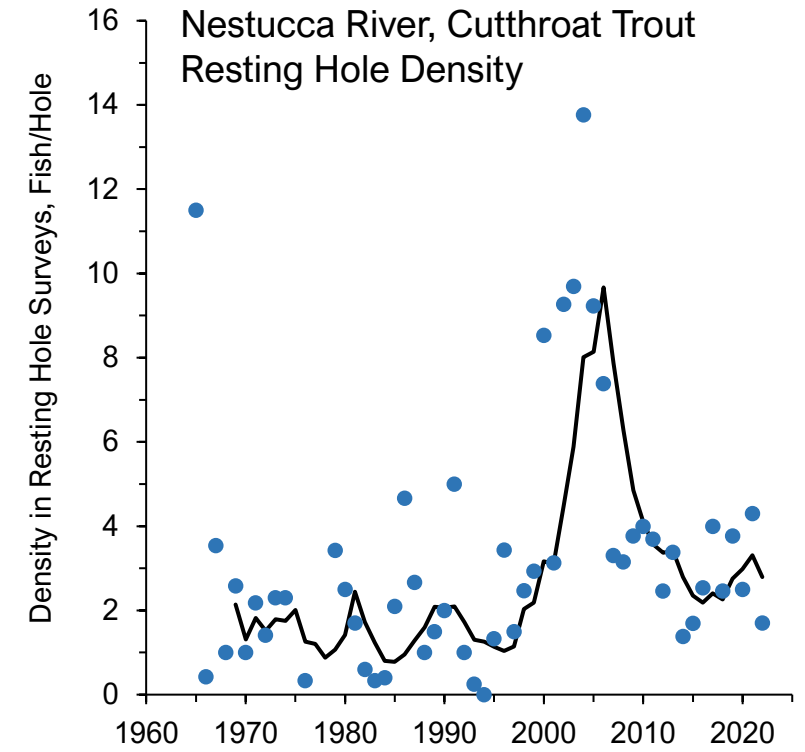
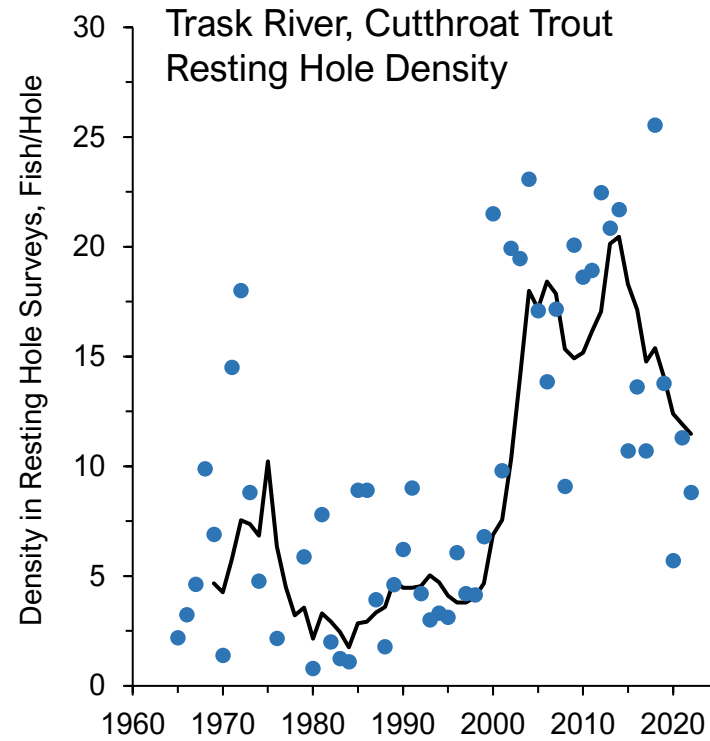
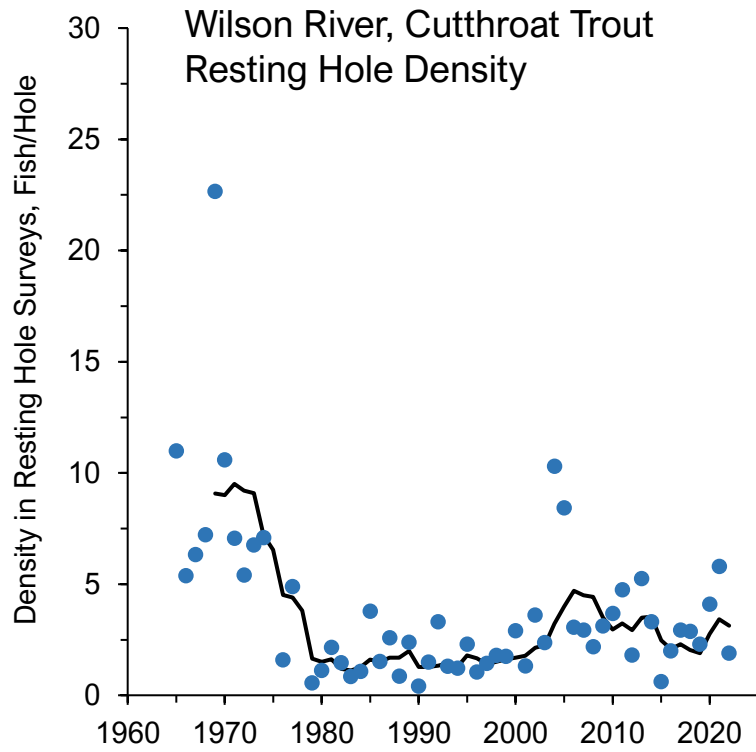
Oregon Coast SMU

Smolt Traps

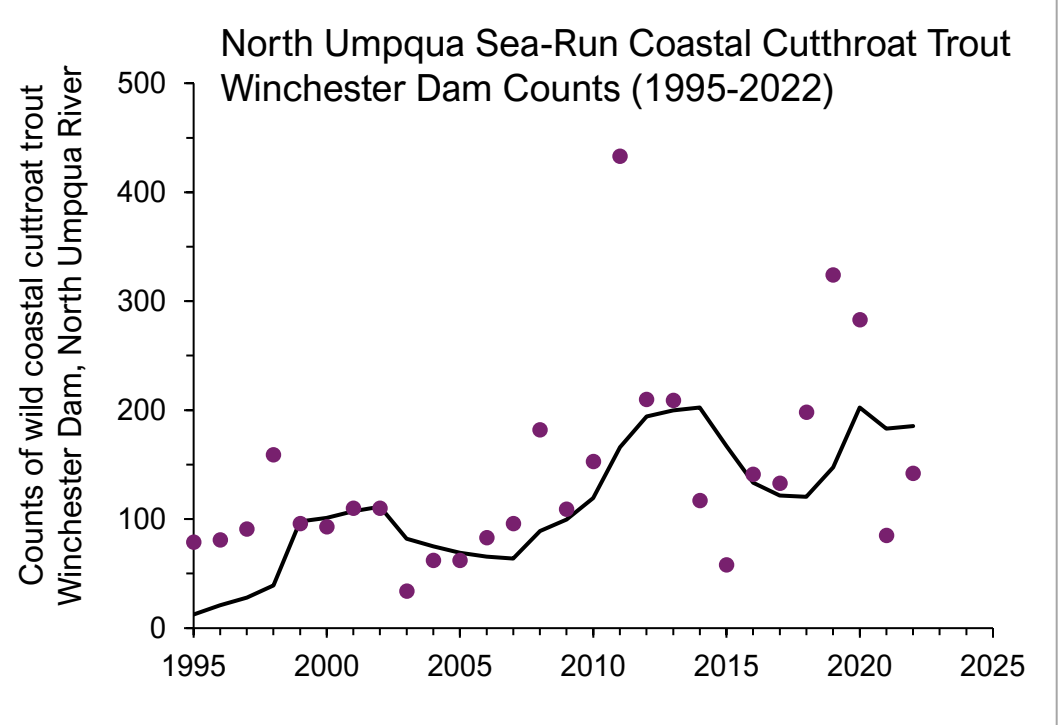
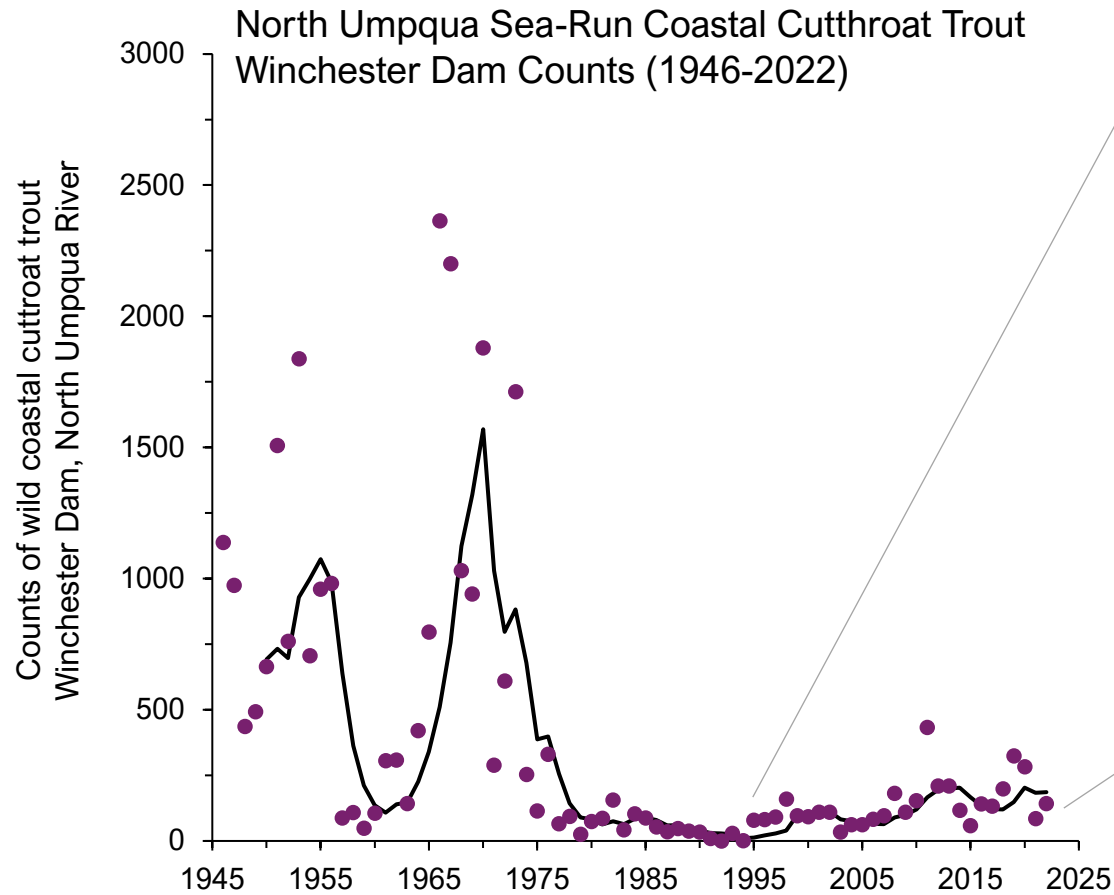




North Coast Resting Hole Counts



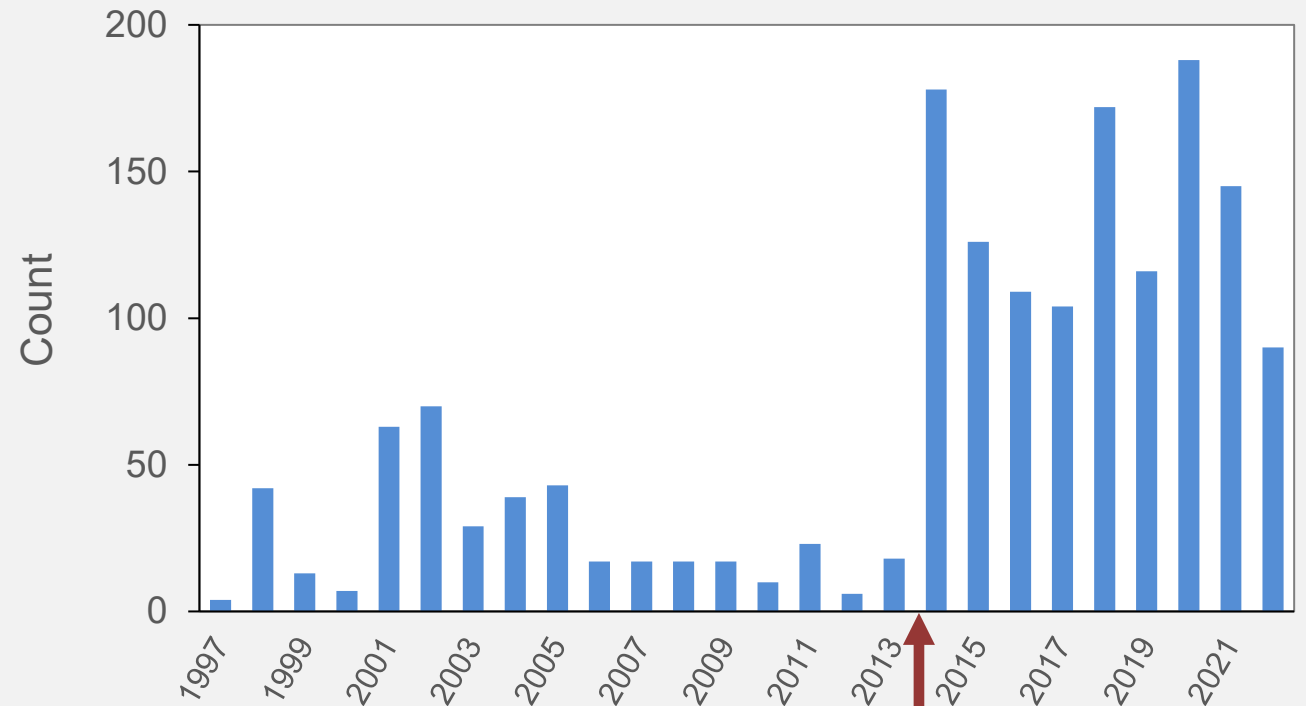
Winchester Dam Counts



Cascade Creek Life Cycle Monitoring Site



Cutthroat trout ≥ 250 mm captured at adult fish trap (Oct-May)

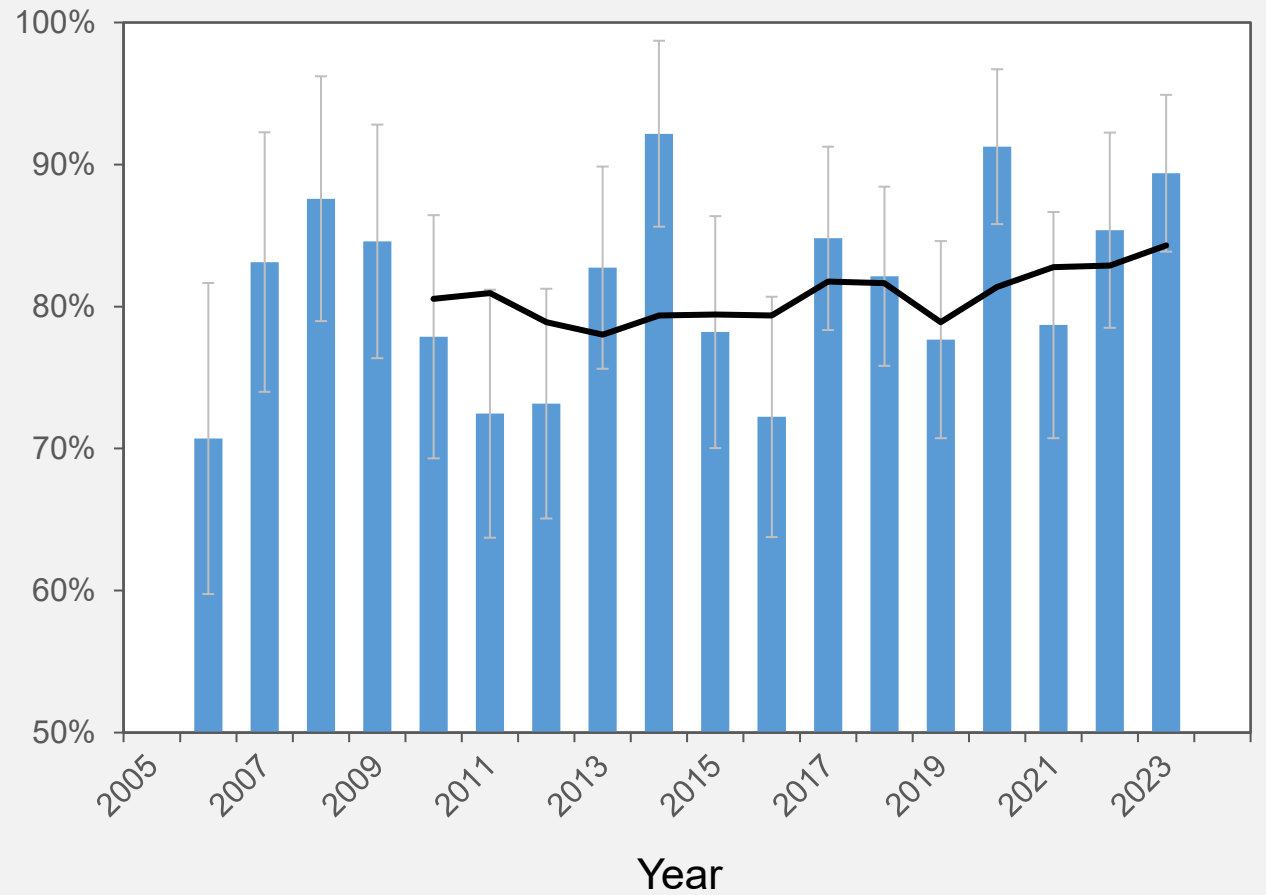


New bar spacing
in adult trap

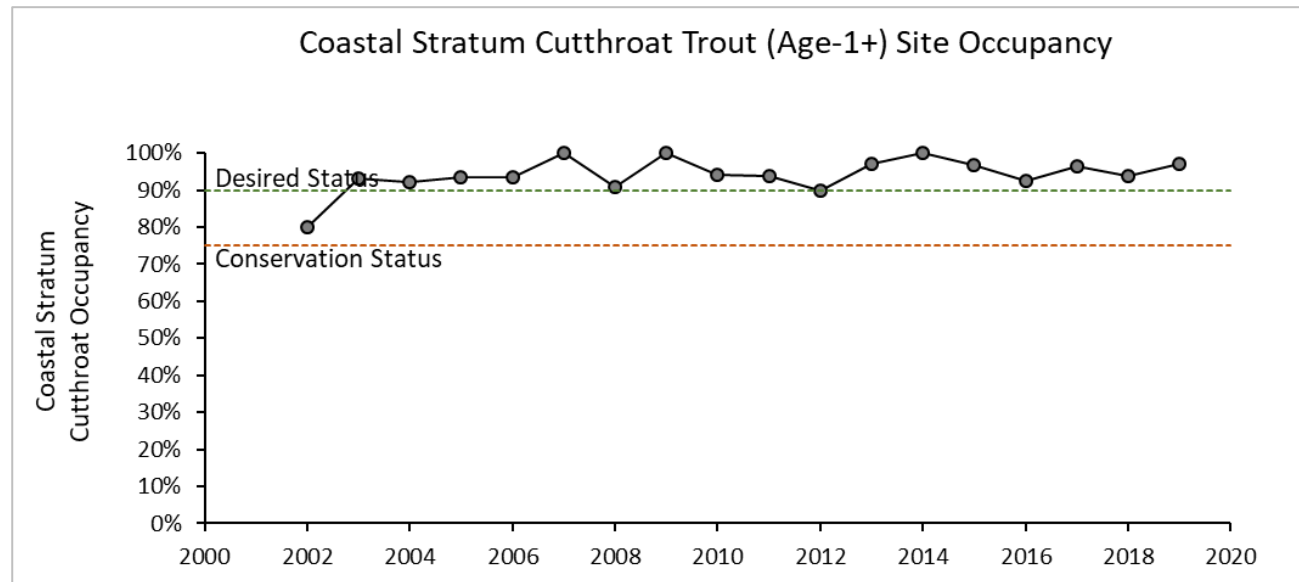
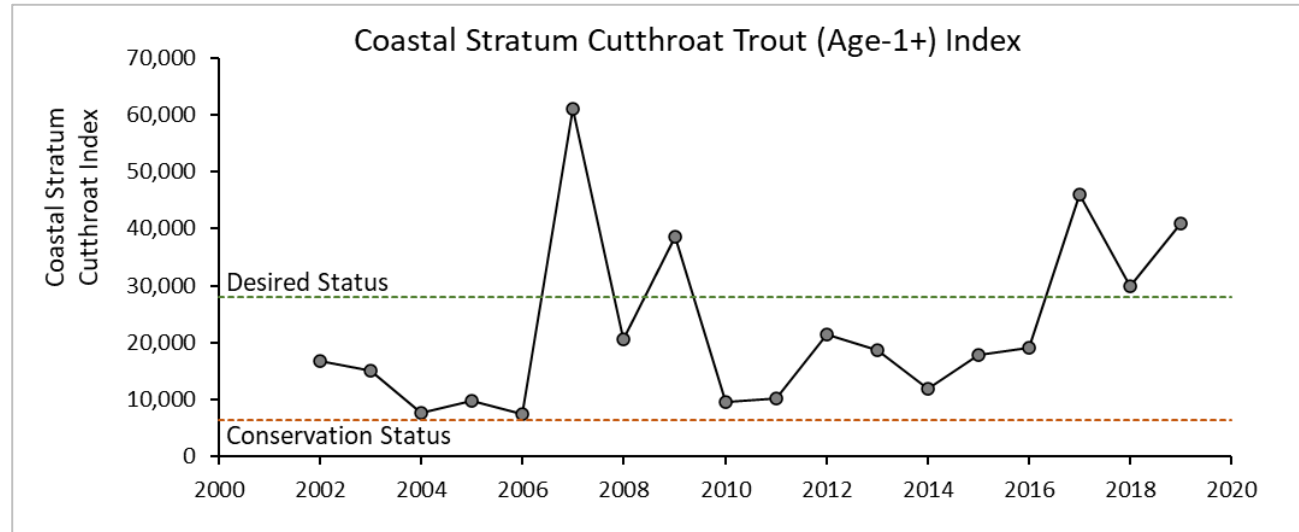
Lower Columbia SMU



Percentage of snorkel sites
with
CCT observed
(46-85 sites/year)

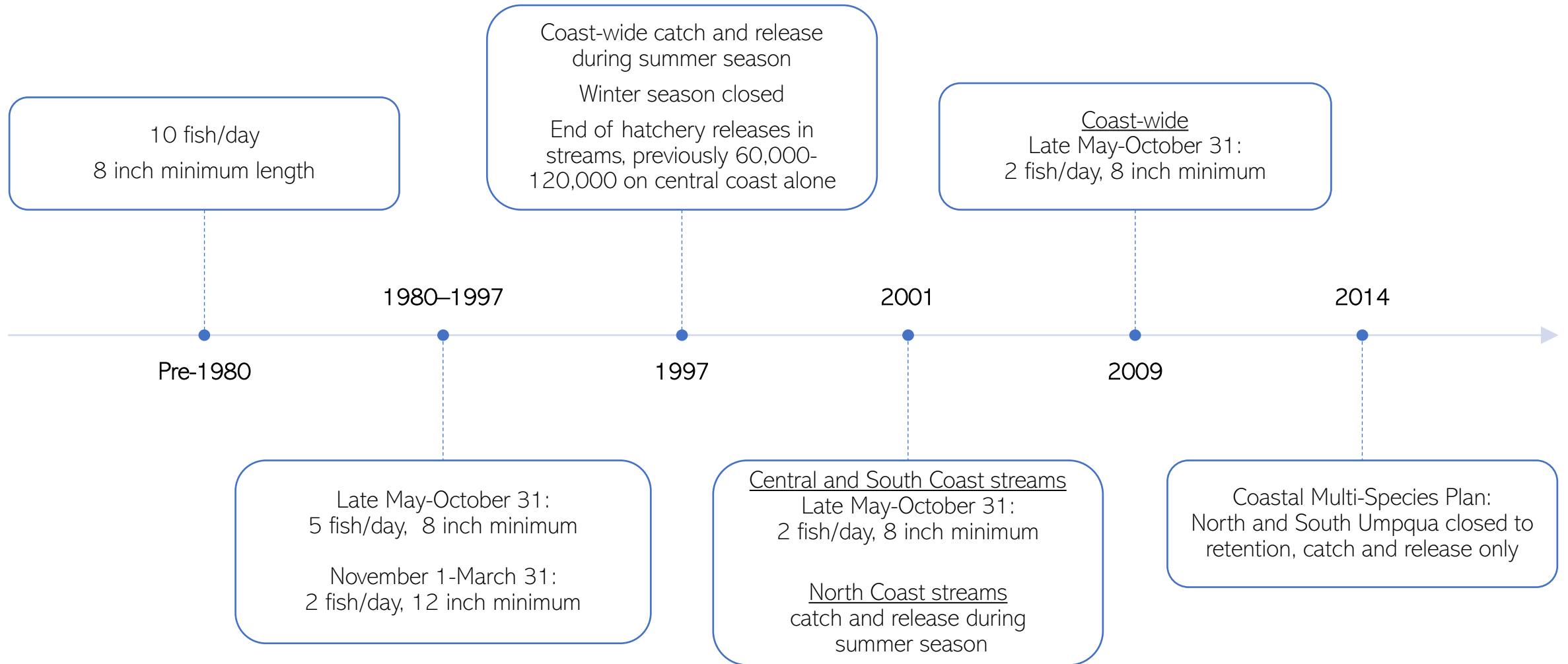


Rogue—South Coast SMU



Coastal Cutthroat Trout Fishing Regulations

Timeline of Trout Fishing Regulations



Trout Fishing Regulations Overview

Oregon Coast, Rogue-South Coast, and portions of Lower Columbia SMU:

Streams:

- Open May 22-Oct 31
- 2 fish/day, 8 inch minimum
- Select streams catch-and-release only, some open all year
- Artificial flies and lures above tidewater

Lakes:

- Open all year
- 5 fish/day, 8 inch minimum

Willamette SMU:

Streams:

- Open May 22-Oct 31, with select areas open all year
- Catch-and-release only, except in select areas with 2 fish/day
- Angling restricted to artificial flies and lures

Lakes:

- Open all year
- 5 fish/day, 8 inch minimum



Habitat Protection and Restoration

Private Forest Accord

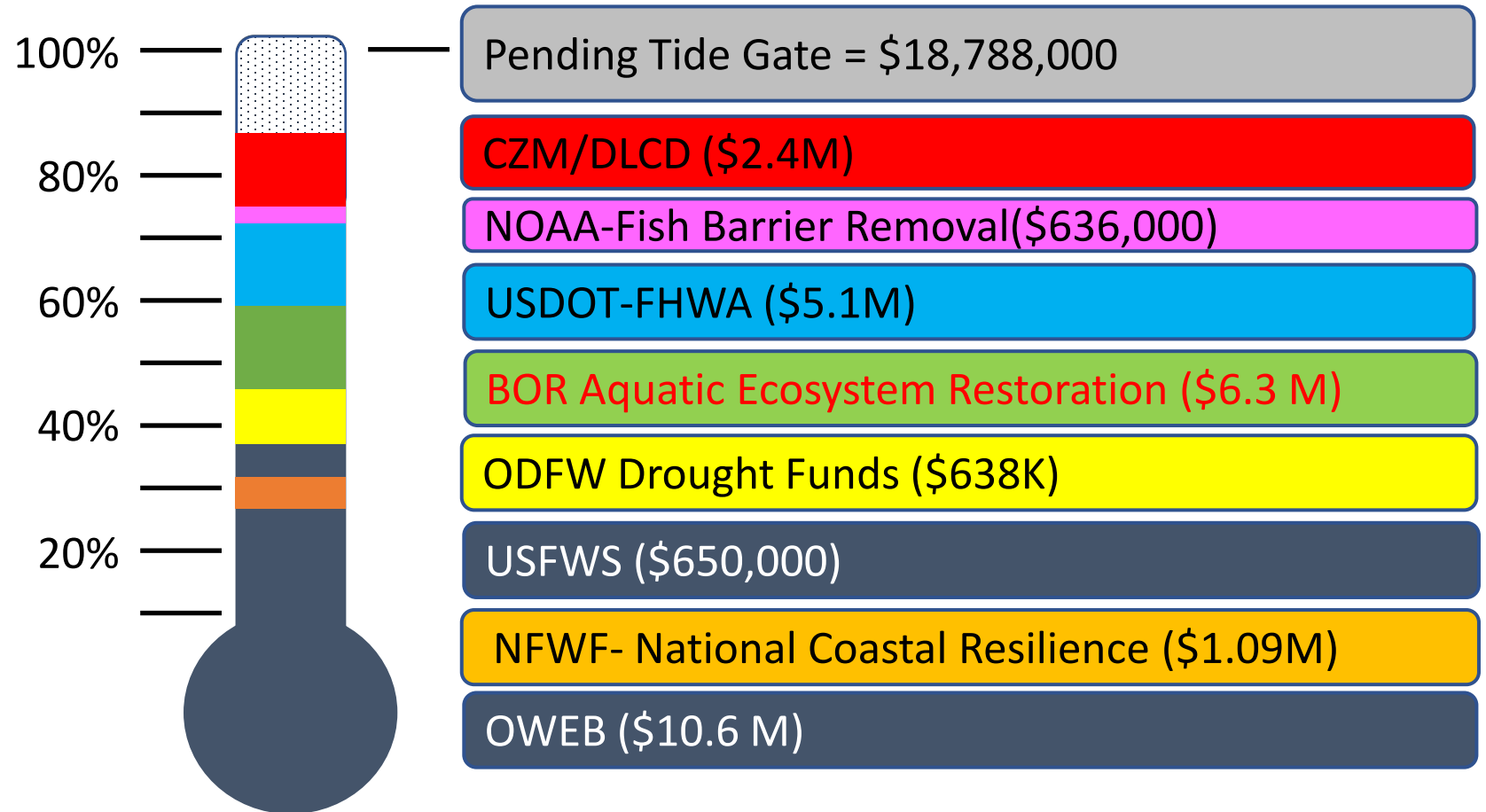


- Agreement to recommend changes to the Oregon Forest Practices Act.
- Proposed state legislation was signed into law in 2022
- Changes impact more than 10 million acres of private and non-federal forests
 - Increased stream buffers
 - New standards for forest roads and culverts to remove barriers to fish passage
 - Other regulatory changes aimed to enhance protections for aquatic habitat
 - PFA Mitigation Fund: ~\$10 million/yr for competitive grants
- Habitat Conservation Plan (HCP) in development

Habitat Restoration Funding



Oregon Coast Coho Secured Funding



Conclusions

- Recent ODFW multi-species conservation plans have incorporated coastal cutthroat trout
- Monitoring has generally indicated stable or improving status
- Fishing regulations provide diverse angling opportunities
- Willamette SMU has less systematic monitoring, but generally more restrictive fishing regulations
- Recent regulatory changes and influx of funding for restoration will benefit CCT habitat and climate resilience

